

## 1. kolo Českého poháru staršího žactva

## Výsledková listina



Vrchlabí - areál Vejsplachy

## Soutěžní výbor

Datum závodu Start: 10:00:30  
6. 2. 2016 Konec: 12:07:50Technický delegát: Stanislav Kopřiva  
Asistent T.D.: Petr Kopřiva  
Ředitel závodu: Michal Kučera ml.  
Zástupce STK: Iveta Roubíčková

## Žákyně starší 2003

3 km volně

Start: 10:00:30

Konec: 10:31:42

## Informace o trati

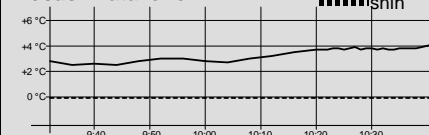
Čís. homologace: 2013/III-06/1

HD: ---- Kola: 2 x 1,5 km

MC: ----

TC: ----

## Počasí: zataženo



| Poř. | Číslo | Jméno                | Roč. | Klub | 1,5 km      | 2. kolo     | Čas     | Ztráta |
|------|-------|----------------------|------|------|-------------|-------------|---------|--------|
| 1.   | 28    | BENEŠOVÁ Nella       | 2003 | SKHA | 4:16.3 (1)  | 4:59.8 (2)  | 9:16.1  |        |
| 2.   | 1     | PROKEŠOVÁ Tereza     | 2003 | DULI | 4:25.3 (3)  | 4:57.0 (1)  | 9:22.3  | 6.2    |
| 3.   | 29    | VÁGNEROVÁ Viktorie   | 2003 | LOTE | 4:23.7 (2)  | 5:04.8 (3)  | 9:28.5  | 12.4   |
| 4.   | 25    | ZATLOUKALOVÁ Barbora | 2003 | SKIJ | 4:28.0 (5)  | 5:10.2 (5)  | 9:38.2  | 22.1   |
| 5.   | 36    | MATOUŠOVÁ Gabriela   | 2003 | SPVR | 4:27.8 (4)  | 5:10.9 (6)  | 9:38.7  | 22.6   |
| 6.   | 8     | OKLAMČÁKOVÁ Anna     | 2003 | JBCN | 4:36.4 (8)  | 5:08.2 (4)  | 9:44.6  | 28.5   |
| 7.   | 37    | GOTVALDOVÁ Kateřina  | 2003 | JIJD | 4:38.5 (11) | 5:17.3 (7)  | 9:55.8  | 39.7   |
| 8.   | 38    | KLEINOVÁ Lucie       | 2003 | SNKV | 4:31.7 (6)  | 5:25.2 (15) | 9:56.9  | 40.8   |
| 9.   | 35    | MACHÁČKOVÁ Tereza    | 2003 | SKJA | 4:38.0 (10) | 5:19.1 (8)  | 9:57.1  | 41.0   |
| 10.  | 21    | JEŽKOVÁ Barbora      | 2003 | JBCN | 4:35.6 (7)  | 5:23.9 (11) | 9:59.5  | 43.4   |
| 11.  | 30    | NOVÁČKOVÁ Lucie      | 2003 | FEJE | 4:37.8 (9)  | 5:22.9 (10) | 10:00.7 | 44.6   |
| 12.  | 18    | RYCHLÍKOVÁ Anna      | 2003 | LKAS | 4:41.7 (14) | 5:21.0 (9)  | 10:02.7 | 46.6   |
| 13.  | 15    | DUBSKÁ Barbora       | 2003 | SOSK | 4:42.2 (15) | 5:25.8 (16) | 10:08.0 | 51.9   |
| 14.  | 9     | PAVLŮ Kateřina       | 2003 | JBCN | 4:40.7 (13) | 5:28.0 (17) | 10:08.7 | 52.6   |
| 15.  | 22    | HŮRKOVÁ Johanka      | 2003 | CZST | 4:39.7 (12) | 5:30.5 (18) | 10:10.2 | 54.1   |
| 16.  | 11    | HONSOVÁ Anežka       | 2003 | SKSV | 4:46.8 (19) | 5:24.5 (14) | 10:11.3 | 55.2   |
| 17.  | 4     | VRÁNOVÁ Iva          | 2003 | NMNM | 4:51.6 (21) | 5:23.9 (11) | 10:15.5 | 59.4   |
| 18.  | 27    | ZIMOVÁ Michaela      | 2003 | SPVR | 4:53.8 (23) | 5:24.0 (13) | 10:17.8 | 1:01.7 |
| 19.  | 42    | VOHÁŇKOVÁ Barbora    | 2003 | SKJA | 4:45.0 (16) | 5:33.6 (21) | 10:18.6 | 1:02.5 |
| 20.  | 23    | MOUČKOVÁ Michaela    | 2003 | LOTE | 4:46.7 (18) | 5:34.8 (22) | 10:21.5 | 1:05.4 |
| 21.  | 24    | RYCHLÍKOVÁ Marie     | 2003 | LKAS | 4:52.4 (22) | 5:32.0 (20) | 10:24.4 | 1:08.3 |
| 22.  | 5     | KOHLEROVÁ Eliška     | 2003 | JBCN | 4:55.1 (24) | 5:31.2 (19) | 10:26.3 | 1:10.2 |
| 23.  | 17    | BERGEROVÁ Veronika   | 2003 | STUD | 4:49.7 (20) | 5:38.6 (23) | 10:28.3 | 1:12.2 |
| 24.  | 39    | PICKOVÁ Barbora      | 2003 | SOSY | 4:46.3 (17) | 5:44.2 (29) | 10:30.5 | 1:14.4 |
| 25.  | 31    | MARTÍNKOVÁ Monika    | 2003 | CSKV | 4:56.9 (27) | 5:39.6 (25) | 10:36.5 | 1:20.4 |
| 26.  | 12    | DUŠKOVÁ Anna         | 2003 | JBCN | 4:55.5 (26) | 5:42.0 (28) | 10:37.5 | 1:21.4 |
| 27.  | 19    | KLOČÁKOVÁ Sára       | 2003 | LKAS | 4:58.2 (28) | 5:44.2 (29) | 10:42.4 | 1:26.3 |
| 28.  | 3     | TULKOVÁ Jesika       | 2003 | SKHA | 5:04.9 (30) | 5:39.3 (24) | 10:44.2 | 1:28.1 |
| 29.  | 10    | DRAHOTOVÁ Zuzana     | 2003 | JBCN | 5:07.3 (33) | 5:39.9 (26) | 10:47.2 | 1:31.1 |
| 30.  | 6     | VÖLFLOVÁ Natálie     | 2003 | SOSY | 5:06.0 (31) | 5:41.3 (27) | 10:47.3 | 1:31.2 |
| 31.  | 34    | JAKOUBĚOVÁ Kateřina  | 2003 | SKIJ | 5:01.3 (29) | 5:48.2 (31) | 10:49.5 | 1:33.4 |
| 32.  | 40    | MIKSOVÁ Barbora      | 2003 | JIJD | 4:55.3 (25) | 6:00.3 (34) | 10:55.6 | 1:39.5 |
| 33.  | 20    | BORLOVÁ Eliška       | 2003 | SETA | 5:13.2 (36) | 5:56.5 (33) | 11:09.7 | 1:53.6 |
| 34.  | 26    | VOTOČKOVÁ Veronika   | 2003 | SKHA | 5:06.9 (32) | 6:04.3 (36) | 11:11.2 | 1:55.1 |
| 35.  | 41    | KÁLALOVÁ Eliška      | 2003 | TRUT | 5:18.0 (37) | 5:55.3 (32) | 11:13.3 | 1:57.2 |
| 36.  | 32    | MAJEROVÁ Jana        | 2003 | SKHA | 5:11.2 (35) | 6:03.9 (35) | 11:15.1 | 1:59.0 |
| 37.  | 2     | ŘEHÁKOVÁ Gabriela    | 2003 | SNKV | 5:08.0 (34) | 6:07.6 (38) | 11:15.6 | 1:59.5 |
| 38.  | 16    | DUŠTOVÁ Andrea       | 2003 | LSKL | 5:31.0 (39) | 6:08.9 (39) | 11:39.9 | 2:23.8 |

|  |  |                      |
|--|--|----------------------|
| <b>Žákyně starší 2003</b><br><b>3 km volně</b><br>Start: 10:00:30      Konec: 10:31:42 | <b>Informace o trati</b><br>Čís. homologace: 2013/III-06/1<br>HD: ----      Kola: 2 x 1,5 km<br>MC: ----<br>TC: ---- | Počasí: zataženo<br> |
|--|--|----------------------|

| Poř. | Číslo | Jméno             | Roč. | Klub | 1,5 km      | 2. kolo     | Čas     | Ztráta |
|------|-------|-------------------|------|------|-------------|-------------|---------|--------|
| 39.  | 13    | VRÁNOVÁ Barbora   | 2003 | TRUT | 5:36.1 (40) | 6:07.3 (37) | 11:43.4 | 2:27.3 |
| 40.  | 33    | ŠUSTKOVÁ Kateřina | 2003 | SASM | 5:26.1 (38) | 6:21.9 (40) | 11:48.0 | 2:31.9 |
| 41.  | 7     | MALÁ Sára         | 2003 | LSKL | 5:48.0 (41) | 6:27.6 (41) | 12:15.6 | 2:59.5 |
| 42.  | 14    | BRADÁČOVÁ Anna    | 2003 | LOTE | 5:53.8 (42) | 6:29.4 (42) | 12:23.2 | 3:07.1 |

Přihlášeno: 42

Startovalo: 42

Klasifikováno: 42

|  |  |                      |
|--|--|----------------------|
| <b>Žákyně starší 2002</b><br><b>3 km volně</b><br>Start: 10:30:30      Konec: 10:54:21 | <b>Informace o trati</b><br>Čís. homologace: 2013/III-06/1<br>HD: ----      Kola: 2 x 1,5 km<br>MC: ----<br>TC: ---- | Počasí: zataženo<br> |
|--|--|----------------------|

| Poř. | Číslo | Jméno               | Roč. | Klub | 1,5 km      | 2. kolo     | Čas     | Ztráta   |
|------|-------|---------------------|------|------|-------------|-------------|---------|----------|
| 1.   | 82    | MASÁŘIKOVÁ Gabriela | 2002 | JBCN | 3:52.0 (1)  | 4:29.6 (1)  | 8:21.6  |          |
| 2.   | 81    | RYSULOVÁ Marie      | 2002 | SKIJ | 4:02.9 (2)  | 4:42.2 (2)  | 8:45.1  | 23.5     |
| 3.   | 79    | ŠIBRAVOVÁ Eliška    | 2002 | DULI | 4:07.2 (3)  | 4:50.5 (3)  | 8:57.7  | 36.1     |
| 4.   | 78    | MIČKEROVÁ Karla     | 2002 | FEJE | 4:16.2 (4)  | 4:52.5 (4)  | 9:08.7  | 47.1     |
| 5.   | 80    | ELICEROVÁ Kateřina  | 2002 | JBCN | 4:19.6 (5)  | 5:00.7 (6)  | 9:20.3  | 58.7     |
| 6.   | 77    | SVOBODOVÁ Kateřina  | 2002 | SKIJ | 4:27.3 (12) | 5:00.3 (5)  | 9:27.6  | 1:06.0   |
| 7.   | 76    | BŘEČKOVÁ Aneta      | 2002 | JBCN | 4:25.1 (9)  | 5:05.0 (7)  | 9:30.1  | 1:08.5   |
| 8.   | 75    | RYŠKOVÁ Karolína    | 2002 | RDRY | 4:21.2 (6)  | 5:11.7 (9)  | 9:32.9  | 1:11.3   |
| 9.   | 73    | JANOŠKOVÁ Karin     | 2002 | TJRO | 4:21.3 (7)  | 5:14.4 (11) | 9:35.7  | 1:14.1   |
| 10.  | 71    | NOVOTNÁ Annie       | 2002 | SOSY | 4:26.2 (10) | 5:09.8 (8)  | 9:36.0  | 1:14.4   |
| 11.  | 74    | KALOVSKÁ Viktorie   | 2002 | SKBR | 4:24.3 (8)  | 5:12.3 (10) | 9:36.6  | 1:15.0   |
| 12.  | 66    | BARÁKOVÁ Barbora    | 2002 | SPVR | 4:26.8 (11) | 5:16.8 (12) | 9:43.6  | 1:22.0   |
| 13.  | 72    | DOHNÁLKOVÁ Jana     | 2002 | SKSK | 4:27.4 (13) | 5:20.5 (13) | 9:47.9  | 1:26.3   |
| 14.  | 62    | VITÁKOVÁ Petra      | 2002 | SCPL | 4:39.7 (15) | 5:23.0 (14) | 10:02.7 | 1:41.1   |
| 15.  | 63    | KULHÁNKOVÁ Eva      | 2002 | SKBR | 4:39.1 (14) | 5:30.2 (16) | 10:09.3 | 1:47.7   |
| 16.  | 67    | CHRÁSTOVÁ Tereza    | 2002 | STUD | 4:44.6 (21) | 5:25.8 (15) | 10:10.4 | 1:48.8   |
| 17.  | 64    | PEKÁRKOVÁ Anna      | 2002 | LSKL | 4:42.7 (18) | 5:31.4 (17) | 10:14.1 | 1:52.5   |
| 18.  | 60    | TUŽOVÁ Barbora      | 2002 | JBCN | 4:39.8 (16) | 5:35.4 (19) | 10:15.2 | 1:53.6   |
| 19=  | 55    | DVOŘÁKOVÁ Kateřina  | 2002 | BAOS | 4:47.1 (22) | 5:33.5 (18) | 10:20.6 | 1:59.0   |
| 19=  | 68    | CHLÁPKOVÁ Julie     | 2002 | SKBR | 4:42.2 (17) | 5:38.4 (20) | 10:20.6 | 1:59.0   |
| 21.  | 69    | NIKODÝMOVÁ Denisa   | 2002 | SOSK | 4:43.9 (20) | 5:39.6 (21) | 10:23.5 | 2:01.9   |
| 22.  | 65    | BAKEŠOVÁ Denisa     | 2002 | FEJE | 4:42.7 (18) | 5:46.7 (25) | 10:29.4 | 2:07.8   |
| 23.  | 59    | VAVŘAČOVÁ Anežka    | 2002 | SOSK | 4:54.3 (23) | 5:41.1 (23) | 10:35.4 | 2:13.8   |
| 24.  | 70    | BAJČÍKOVÁ Ema       | 2002 | SKIB | 4:54.3 (23) | 5:45.0 (24) | 10:39.3 | 2:17.7   |
| 25.  | 53    | GOLINEY Maryana     | 2002 | SASM | 5:01.3 (25) | 5:40.2 (22) | 10:41.5 | 2:19.9   |
| 26.  | 58    | NOHEJLOVÁ Anna      | 2002 | BAOS | 5:11.2 (27) | 5:54.7 (26) | 11:05.9 | 2:44.3   |
| 27.  | 51    | MACHOLDOVÁ Tereza   | 2002 | LOTE | 5:09.3 (26) | 5:57.6 (27) | 11:06.9 | 2:45.3   |
| 28.  | 57    | ŽÁROVÁ Benedikta    | 2002 | SKBR | 5:32.5 (30) | 6:06.3 (28) | 11:38.8 | 3:17.2   |
| 29.  | 56    | MRÁZOVÁ Jana        | 2002 | FEJE | 5:30.3 (29) | 6:20.5 (29) | 11:50.8 | 3:29.2   |
| 30.  | 61    | HECKO Vanesa        | 2002 | SOSK | 5:23.4 (28) | 6:36.4 (30) | 11:59.8 | 3:38.2   |
| 31.  | 54    | ERNESTOVÁ Karolína  | 2002 | SASM | 5:48.5 (31) | 6:52.7 (31) | 12:41.2 | 4:19.6   |
| DNF  | 52    | MATUŠKOVÁ Kristýna  | 2002 | TRUT |             |             |         | vzdal(a) |

## Žákyně starší 2002

3 km volně

Start: 10:30:30

Konec: 10:54:21

### Informace o trati

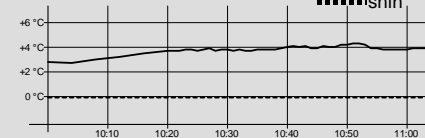
Čís. homologace: 2013/III-06/1

HD: ---- Kola: 2 x 1,5 km

MC: ----

TC: ----

Počasí: zataženo



| Poř. Číslo | Jméno | Roč. | Klub | 1,5 km | 2. kolo | Čas | Ztráta |
|------------|-------|------|------|--------|---------|-----|--------|
|------------|-------|------|------|--------|---------|-----|--------|

Přihlášeno: 32

Startovalo: 32

Klasifikováno: 31

## Žáci starší 2003

4 km volně

Start: 11:00:30

Konec: 11:37:29

### Informace o trati

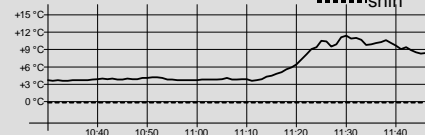
Čís. homologace: 2013/III-05/2

HD: ---- Kola: 2 x 2 km

MC: ----

TC: ----

Počasí: zataženo



| Poř. Číslo | Jméno | Roč.            | Klub | 2 km | 2. kolo     | Čas         | Ztráta  |        |
|------------|-------|-----------------|------|------|-------------|-------------|---------|--------|
| 1.         | 28    | VOTOČEK Matyáš  | 2003 | SKIJ | 6:00.1 (1)  | 7:03.0 (2)  | 13:03.1 |        |
| 2.         | 17    | KOHOUT Jakub    | 2003 | JBCN | 6:09.7 (3)  | 7:03.9 (3)  | 13:13.6 | 10.5   |
| 3.         | 21    | MÜLLER Adam     | 2003 | SNKV | 6:00.4 (2)  | 7:17.4 (5)  | 13:17.8 | 14.7   |
| 4.         | 15    | HÁK Petr        | 2003 | SPVR | 6:21.3 (5)  | 7:02.7 (1)  | 13:24.0 | 20.9   |
| 5.         | 3     | DVOŘÁK Vojtěch  | 2003 | SASM | 6:15.9 (4)  | 7:13.4 (4)  | 13:29.3 | 26.2   |
| 6.         | 23    | WANĚK Hubert    | 2003 | SPVR | 6:21.4 (6)  | 7:22.7 (7)  | 13:44.1 | 41.0   |
| 7.         | 11    | SLÁDEK Jakub    | 2003 | ZDAS | 6:30.9 (7)  | 7:25.6 (12) | 13:56.5 | 53.4   |
| 8.         | 16    | TREJBAL Lukáš   | 2003 | STUD | 6:37.3 (9)  | 7:23.0 (9)  | 14:00.3 | 57.2   |
| 9.         | 8     | KAŠPAR Dominik  | 2003 | TRUT | 6:41.2 (13) | 7:19.2 (6)  | 14:00.4 | 57.3   |
| 10.        | 40    | KRÁKORA Ondřej  | 2003 | TRUT | 6:33.0 (8)  | 7:28.9 (13) | 14:01.9 | 58.8   |
| 11.        | 13    | HONSA Antonín   | 2003 | SKSV | 6:39.3 (11) | 7:22.8 (8)  | 14:02.1 | 59.0   |
| 12.        | 32    | ŠTECHER Filip   | 2003 | LKAS | 6:40.1 (12) | 7:24.3 (10) | 14:04.4 | 1:01.3 |
| 13.        | 24    | HANSLIAN Ondřej | 2003 | SKJA | 6:38.0 (10) | 7:30.2 (16) | 14:08.2 | 1:05.1 |
| 14.        | 18    | VESELÝ Vojtěch  | 2003 | LOTE | 6:43.4 (15) | 7:29.2 (15) | 14:12.6 | 1:09.5 |
| 15.        | 9     | ŘEZNÍK Jan      | 2003 | SKSV | 6:49.9 (18) | 7:25.3 (11) | 14:15.2 | 1:12.1 |
| 16.        | 27    | KOTRABA Jan     | 2003 | SNKV | 6:44.4 (16) | 7:35.6 (17) | 14:20.0 | 1:16.9 |
| 17.        | 39    | ŠKODA Aleš      | 2003 | TRUT | 6:51.6 (19) | 7:29.1 (14) | 14:20.7 | 1:17.6 |
| 18.        | 20    | PREISLER Tomáš  | 2003 | SOSK | 6:42.8 (14) | 7:40.4 (18) | 14:23.2 | 1:20.1 |
| 19.        | 36    | PEŇÁZ Vojtěch   | 2003 | FEJE | 6:57.0 (21) | 7:48.0 (20) | 14:45.0 | 1:41.9 |
| 20.        | 2     | STOKLASA Štěpán | 2003 | TRUT | 6:55.3 (20) | 7:52.7 (21) | 14:48.0 | 1:44.9 |
| 21.        | 41    | VAŇURA Jakub    | 2003 | JBCN | 7:05.7 (26) | 7:44.8 (19) | 14:50.5 | 1:47.4 |
| 22.        | 4     | ŘEZÁČ Tomáš     | 2003 | JBCN | 6:49.3 (17) | 8:02.7 (23) | 14:52.0 | 1:48.9 |
| 23.        | 26    | PTÁK Pavel      | 2003 | SPVR | 6:59.9 (23) | 8:06.4 (26) | 15:06.3 | 2:03.2 |
| 24.        | 42    | ŠTUDLAR Vít     | 2003 | SNKV | 7:05.5 (25) | 8:03.7 (24) | 15:09.2 | 2:06.1 |
| 25.        | 14    | KALIVODA Lukáš  | 2003 | SKSV | 6:59.4 (22) | 8:10.4 (30) | 15:09.8 | 2:06.7 |
| 26.        | 22    | PILÁŘ Ondřej    | 2003 | SKHA | 7:02.8 (24) | 8:07.4 (27) | 15:10.2 | 2:07.1 |
| 27.        | 7     | BRŮNA Jakub     | 2003 | SOVH | 7:14.7 (28) | 8:00.4 (22) | 15:15.1 | 2:12.0 |
| 28.        | 30    | KRÁLIK Pavel    | 2003 | LOTE | 7:17.7 (29) | 8:04.2 (25) | 15:21.9 | 2:18.8 |
| 29.        | 44    | PEŇÁZ Radek     | 2003 | FEJE | 7:06.0 (27) | 8:23.1 (36) | 15:29.1 | 2:26.0 |
| 30.        | 12    | ŠTOLFA Šimon    | 2003 | SPPO | 7:18.5 (31) | 8:16.2 (31) | 15:34.7 | 2:31.6 |
| 31.        | 10    | CILICH Miroslav | 2003 | SOVH | 7:27.4 (32) | 8:08.2 (28) | 15:35.6 | 2:32.5 |
| 32.        | 33    | MACHAČ Šimon    | 2003 | JBCN | 7:17.7 (29) | 8:19.1 (32) | 15:36.8 | 2:33.7 |
| 33.        | 29    | MILITKÝ Matyáš  | 2003 | STUD | 7:28.8 (34) | 8:08.4 (29) | 15:37.2 | 2:34.1 |
| 34.        | 25    | PROKŮPEK Matěj  | 2003 | LOTE | 7:27.4 (32) | 8:23.7 (37) | 15:51.1 | 2:48.0 |
| 35.        | 43    | ŠLAUF Václav    | 2003 | CSKV | 7:31.7 (35) | 8:21.6 (34) | 15:53.3 | 2:50.2 |
| 36.        | 6     | WERNER Adam     | 2003 | SPPO | 7:33.6 (36) | 8:22.7 (35) | 15:56.3 | 2:53.2 |
| 37.        | 19    | OŽDIÁN Pavel    | 2003 | SKIJ | 7:37.3 (39) | 8:21.2 (33) | 15:58.5 | 2:55.4 |
| 38.        | 34    | JAHELKA Adam    | 2003 | TRUT | 7:36.2 (38) | 8:39.8 (38) | 16:16.0 | 3:12.9 |
| 39.        | 38    | ŠIROKÝ Matěj    | 2003 | JBCN | 7:34.6 (37) | 8:43.7 (39) | 16:18.3 | 3:15.2 |

6. 2. 2016 13:40:18

Data processing: info@sport-casomira.cz, http://sport-casomira.cz/

Strana 3 z 5

|  |  |                      |
|--|--|----------------------|
| <b>Žáci starší 2003</b><br><b>4 km volně</b><br>Start: 11:00:30      Konec: 11:37:29 | <b>Informace o trati</b><br>Čís. homologace: 2013/III-05/2<br>HD: ----      Kola: 2 x 2 km<br>MC: ----<br>TC: ---- | Počasí: zataženo<br> |
|--|--|----------------------|

| Poř. | Číslo | Jméno         | Roč. | Klub | 2 km        | 2. kolo     | Čas            | Ztráta |
|------|-------|---------------|------|------|-------------|-------------|----------------|--------|
| 40.  | 5     | LAURIN Albert | 2003 | JBCN | 7:38.7 (40) | 8:45.2 (40) | <b>16:23.9</b> | 3:20.8 |
| 41.  | 37    | FACEK Tomáš   | 2003 | SSKR | 7:48.4 (42) | 8:49.8 (41) | <b>16:38.2</b> | 3:35.1 |
| 42.  | 1     | REJCHA Jáchym | 2003 | LOTE | 7:45.4 (41) | 9:04.5 (43) | <b>16:49.9</b> | 3:46.8 |
| 43.  | 31    | MORAVEC Matěj | 2003 | SKHA | 7:54.8 (43) | 8:57.3 (42) | <b>16:52.1</b> | 3:49.0 |
| 44.  | 35    | RICHTER Filip | 2003 | TRUT | 8:29.2 (44) | 9:15.4 (44) | <b>17:44.6</b> | 4:41.5 |

Přihlášeno: 44

Startovalo: 44

Klasifikováno: 44

|  |  |                      |
|--|--|----------------------|
| <b>Žáci starší 2002</b><br><b>4 km volně</b><br>Start: 11:30:30      Konec: 12:07:50 | <b>Informace o trati</b><br>Čís. homologace: 2013/III-05/2<br>HD: ----      Kola: 2 x 2 km<br>MC: ----<br>TC: ---- | Počasí: zataženo<br> |
|--|--|----------------------|

| Poř. | Číslo | Jméno               | Roč. | Klub | 2 km        | 2. kolo     | Čas            | Ztráta |
|------|-------|---------------------|------|------|-------------|-------------|----------------|--------|
| 1.   | 98    | KOČANDRLE Martin    | 2002 | SCPL | 5:43.8 (2)  | 6:23.7 (1)  | <b>12:07.5</b> |        |
| 2.   | 87    | PAVLÁSEK Šimon      | 2002 | SKSV | 5:46.8 (3)  | 6:39.0 (3)  | <b>12:25.8</b> | 18.3   |
| 3.   | 97    | POKORNÝ Miloš       | 2002 | SKIJ | 5:42.5 (1)  | 6:52.9 (7)  | <b>12:35.4</b> | 27.9   |
| 4.   | 94    | BAJZÍK Lukáš        | 2002 | SKIB | 5:57.1 (5)  | 6:42.6 (5)  | <b>12:39.7</b> | 32.2   |
| 5.   | 85    | SIXTA Ondřej        | 2002 | JBCN | 5:55.8 (4)  | 6:44.6 (6)  | <b>12:40.4</b> | 32.9   |
| 6.   | 92    | ZATLOUKAL Kryštof   | 2002 | SNKV | 6:03.3 (10) | 6:39.7 (4)  | <b>12:43.0</b> | 35.5   |
| 7.   | 71    | SASKA Matěj         | 2002 | SKJA | 6:17.8 (22) | 6:34.6 (2)  | <b>12:52.4</b> | 44.9   |
| 8.   | 89    | MATOUŠEK Matouš     | 2002 | JBCN | 5:57.1 (5)  | 6:58.8 (9)  | <b>12:55.9</b> | 48.4   |
| 9.   | 72    | TROJAN Jakub        | 2002 | ZDAS | 5:58.0 (7)  | 7:00.9 (11) | <b>12:58.9</b> | 51.4   |
| 10.  | 80    | KADLEC Josef        | 2002 | SOSY | 5:59.7 (8)  | 7:01.9 (13) | <b>13:01.6</b> | 54.1   |
| 11.  | 83    | KUDRNÁČ Jakub       | 2002 | SKIJ | 6:07.4 (14) | 6:57.6 (8)  | <b>13:05.0</b> | 57.5   |
| 12.  | 81    | VRBOVSKÝ Benjamin   | 2002 | FEJE | 6:06.6 (11) | 7:03.6 (15) | <b>13:10.2</b> | 1:02.7 |
| 13.  | 67    | HASMAN Marek        | 2002 | SCPL | 6:10.9 (17) | 7:00.4 (10) | <b>13:11.3</b> | 1:03.8 |
| 14.  | 88    | ZEMAN Jiří          | 2002 | DULI | 6:06.6 (11) | 7:08.8 (16) | <b>13:15.4</b> | 1:07.9 |
| 15.  | 96    | ZUNA Ondřej         | 2002 | SCPL | 6:13.9 (19) | 7:01.7 (12) | <b>13:15.6</b> | 1:08.1 |
| 16.  | 84    | HAWEL Marek         | 2002 | SPVR | 6:08.4 (16) | 7:09.4 (18) | <b>13:17.8</b> | 1:10.3 |
| 17.  | 95    | NOVOTNÝ Jindřich    | 2002 | LKAS | 6:07.2 (13) | 7:11.2 (20) | <b>13:18.4</b> | 1:10.9 |
| 18.  | 93    | MEDEK Jakub         | 2002 | FEJE | 6:01.7 (9)  | 7:17.7 (24) | <b>13:19.4</b> | 1:11.9 |
| 19.  | 86    | PLHA Martin         | 2002 | SNKV | 6:07.7 (15) | 7:12.6 (22) | <b>13:20.3</b> | 1:12.8 |
| 20.  | 99    | CENEK Jáchym        | 2002 | FEJE | 6:11.0 (18) | 7:09.5 (19) | <b>13:20.5</b> | 1:13.0 |
| 21.  | 76    | PAULUS Lukáš        | 2002 | SKIJ | 6:18.3 (23) | 7:03.4 (14) | <b>13:21.7</b> | 1:14.2 |
| 22.  | 65    | MARTÍNEK Aleš       | 2002 | SKJA | 6:18.4 (24) | 7:11.3 (21) | <b>13:29.7</b> | 1:22.2 |
| 23.  | 91    | SLÁMA Filip         | 2002 | JBCN | 6:14.7 (21) | 7:18.2 (25) | <b>13:32.9</b> | 1:25.4 |
| 24.  | 77    | SÁSKA Jan           | 2002 | SKSV | 6:26.2 (28) | 7:08.8 (16) | <b>13:35.0</b> | 1:27.5 |
| 25.  | 74    | ŠVANDRLÍK František | 2002 | SKIJ | 6:23.7 (27) | 7:14.2 (23) | <b>13:37.9</b> | 1:30.4 |
| 26.  | 75    | HABLE Rudolf        | 2002 | JBCN | 6:14.5 (20) | 7:25.1 (32) | <b>13:39.6</b> | 1:32.1 |
| 27.  | 82    | HUSÁK Robin         | 2002 | SNKV | 6:20.9 (26) | 7:20.9 (27) | <b>13:41.8</b> | 1:34.3 |
| 28=  | 62    | NETRVAL Jakub       | 2002 | SCPL | 6:32.8 (32) | 7:19.7 (26) | <b>13:52.5</b> | 1:45.0 |
| 28=  | 68    | LUŠOVSKÝ Jan        | 2002 | TJRO | 6:29.6 (31) | 7:22.9 (28) | <b>13:52.5</b> | 1:45.0 |
| 30.  | 90    | BEŠTA Václav        | 2002 | SNKV | 6:20.7 (25) | 7:34.2 (37) | <b>13:54.9</b> | 1:47.4 |
| 31.  | 53    | PAVLÍČEK Marek      | 2002 | SPVR | 6:34.1 (34) | 7:24.4 (31) | <b>13:58.5</b> | 1:51.0 |
| 32.  | 60    | HOUDEK Vojtěch      | 2002 | SKBR | 6:36.8 (35) | 7:23.4 (30) | <b>14:00.2</b> | 1:52.7 |
| 33.  | 59    | RICHTER Lukáš       | 2002 | SCPL | 6:33.9 (33) | 7:28.3 (34) | <b>14:02.2</b> | 1:54.7 |
| 34.  | 61    | ŠKRÉTA Vojtěch      | 2002 | DULI | 6:29.2 (29) | 7:36.9 (38) | <b>14:06.1</b> | 1:58.6 |

6. 2. 2016 13:40:19

Data processing: info@sport-casomira.cz, http://sport-casomira.cz/

Strana 4 z 5



# Žáci starší 2002

## 4 km volně

Start: 11:30:30

Konec: 12:07:50

### Informace o trati

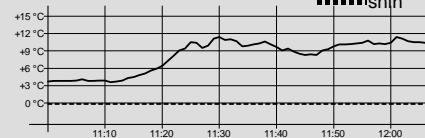
Čís. homologace: 2013/III-05/2

HD: ---- Kola: 2 x 2 km

MC: ----

TC: ----

Počasí: zataženo



| Poř. | Číslo | Jméno            | Roč. | Klub | 2 km        | 2. kolo     | Čas            | Ztráta |
|------|-------|------------------|------|------|-------------|-------------|----------------|--------|
| 35.  | 78    | NOVOTNÝ David    | 2002 | LKAS | 6:29.5 (30) | 7:37.5 (40) | <b>14:07.0</b> | 1:59.5 |
| 36.  | 73    | RYŠÁNEK Nick     | 2002 | JBCN | 6:46.7 (41) | 7:23.1 (29) | <b>14:09.8</b> | 2:02.3 |
| 37.  | 69    | ŠTEFAN Vít       | 2002 | STUD | 6:43.6 (37) | 7:28.5 (35) | <b>14:12.1</b> | 2:04.6 |
| 38.  | 64    | ŠKODA Ondřej     | 2002 | TRUT | 6:43.8 (38) | 7:38.5 (41) | <b>14:22.3</b> | 2:14.8 |
| 39.  | 66    | PTÁČEK Jakub     | 2002 | DULI | 6:45.5 (40) | 7:37.2 (39) | <b>14:22.7</b> | 2:15.2 |
| 40.  | 54    | SATORIE Jáchym   | 2002 | SOSY | 7:02.6 (44) | 7:26.2 (33) | <b>14:28.8</b> | 2:21.3 |
| 41.  | 70    | KUHN Michal      | 2002 | TRUT | 6:41.8 (36) | 7:56.3 (43) | <b>14:38.1</b> | 2:30.6 |
| 42.  | 58    | ČERVENÝ Ondřej   | 2002 | SKSV | 7:06.7 (45) | 7:31.8 (36) | <b>14:38.5</b> | 2:31.0 |
| 43.  | 63    | SPĚVÁČEK Vojtěch | 2002 | SOSY | 7:00.3 (43) | 7:41.1 (42) | <b>14:41.4</b> | 2:33.9 |
| 44.  | 79    | HÁJEK Jan        | 2002 | NMNM | 6:45.1 (39) | 7:59.5 (44) | <b>14:44.6</b> | 2:37.1 |
| 45.  | 56    | MYNÁŘ Šimon      | 2002 | TJRO | 6:55.1 (42) | 8:02.9 (46) | <b>14:58.0</b> | 2:50.5 |
| 46.  | 52    | KALA Jakub       | 2002 | SKBR | 7:13.7 (46) | 7:59.8 (45) | <b>15:13.5</b> | 3:06.0 |
| 47.  | 55    | HARVÁNEK Adam    | 2002 | TRUT | 7:24.2 (47) | 8:09.1 (47) | <b>15:33.3</b> | 3:25.8 |
| 48.  | 57    | ZEMÁNEK Jakub    | 2002 | LSKL | 7:25.5 (48) | 8:22.2 (48) | <b>15:47.7</b> | 3:40.2 |
| 49.  | 51    | BARTUŠEK Denis   | 2002 | SOSY | 8:05.3 (49) | 8:50.5 (49) | <b>16:55.8</b> | 4:48.3 |

Přihlášeno: 49

Startovalo: 49

Klasifikováno: 49

Technický delegát  
Stanislav Kopriva

Sekretář závodu  
Michaela Háková